

# T-1034S SMT10mm-width type

<IC drive type>

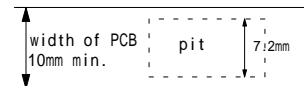
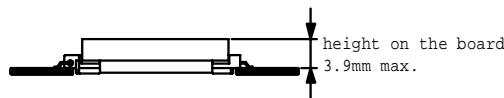
## Features

- Slim, low-profile design (3.9mm max\*) and high power.  
(\* height on board is 3.9mm max. Pit type)
- PCB width is 10mm, because pit wide is 7.2mm.
- Supports reflow soldering. (Supports Pb free soldering)
- Supports automatic mounting. (Tray type)
- High efficiency possible by using separate excitation IC.



## Applications

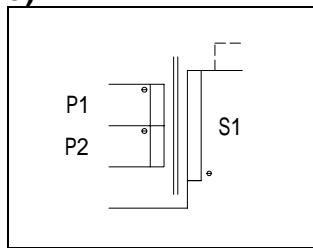
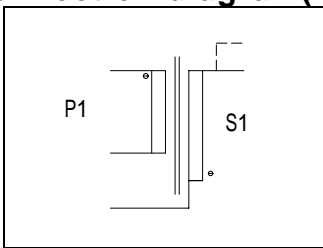
- Note PC
- LCD monitor (up to 21 inches)
- LCD TV (up to 21 inches)



## Electric characteristics

Part No.	Max output power (W)	Frequency (KHz)	Max output Voltage (Vo-p)	Output open Voltage (Vo-p)	Withstand Voltage (AC60Hz) (Vrms)	
					Primary & secondary	Secondary & core
CD-T-1034S	4(6) <*1>	40 ~ 200	2000 <*2>	2800 <*3>	500	500

## Connection diagram(Example)



Standard GAP (3kinds)	
GAP(mm)	AL(nH/N <sup>2</sup> )
NON	-
0.075	100
0.10	90
0.15	75

$A_e = 8\text{mm}^2$

## Notice

To match your exact needs, please contact us for information on T-1034S customization.

The T-1034S cannot be used in a floating type circuit.

Be sure to ground the No.6 pin (start pin of the secondary winding).

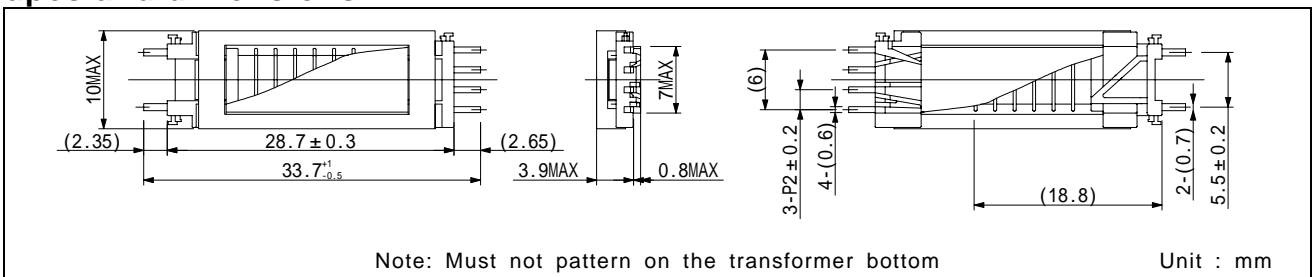
\*1 Max output power and efficiency vary according to operating conditions.

(Up to 6W according to operating conditions)

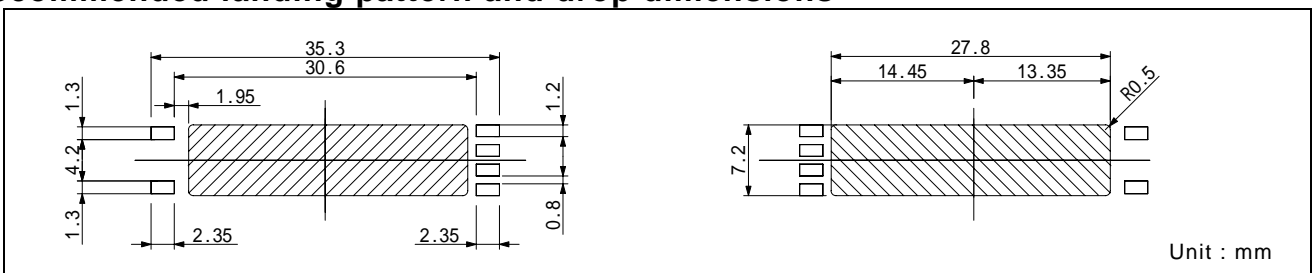
\*2 It varies according to the number of winding turns.

\*3 It is within 3sec or less and varies according to the number of winding turns.

## shapes and dimensions



## Recommended landing pattern and drop dimensions



The specification is foresight and changes occasionally.