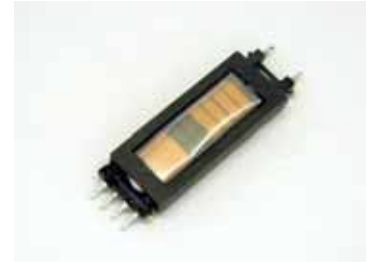


T-1034 SMT10mm-width type

<IC drive type>

Features

- Slim, low-profile design(4.7mm max.) and high power.
- Supports reflow soldering. (Supports Pb free soldering)
- Supports automatic mounting. (Tray type)
- High efficiency possible by using separate excitation IC.



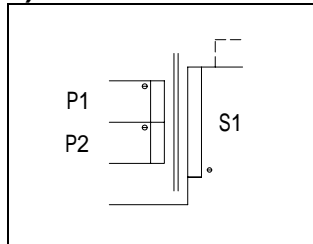
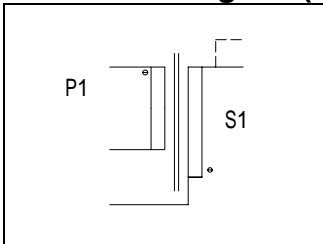
Applications

- Note PC
- LCD monitor (up to 21inches)
- LCD TV (up to 21inches)

Electric characteristics

Part No.	Max output power (W)	Frequency (KHz)	Max output Voltage (Vo-p)	Output open Voltage (Vo-p)	Withstand Voltage (AC60Hz) (Vrms)	
					Primary& secondary	Secondary & core
CD-T-1034	4(6) <*1>	40 ~ 200	2000 <*2>	2800 <*3>	500	500

Connection diagram(Example)



Standard GAP (3kinds)	
GAP(mm)	AL(nH/N ²)
NON	-
0.075	100
0.10	90
0.15	75

Ae=8mm²

Notice

To match your exact needs, please contact us for information on T-1034 customization.

The T-1034 cannot be used in a floating type circuit.

Be sure to ground the No.4 pin (start pin of the secondary winding).

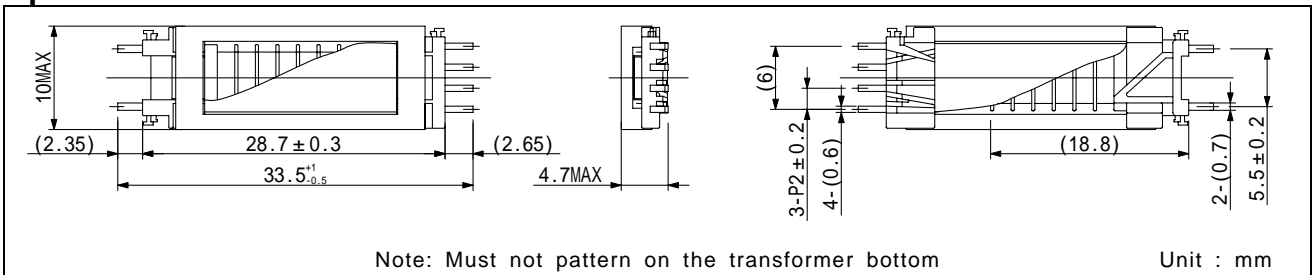
*1 Max output power and efficiency vary according to operating conditions.

(Up to 6W according to operating conditions)

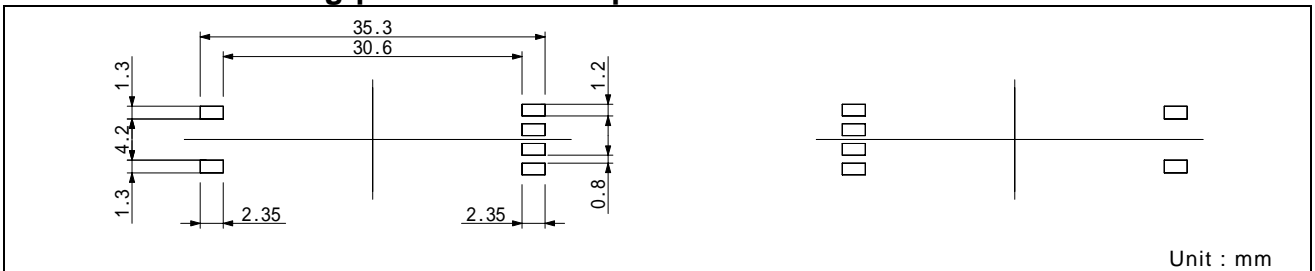
*2 It varies according to the number of winding turns.

*3 It is within 3sec or less and varies according to the number of winding turns.

Shapes and dimensions



Recommended landing pattern and drop dimensions



The specification is foresight and changes occasionally.