

T-1033AS SMT10mm-width type

<IC drive type>

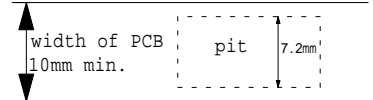
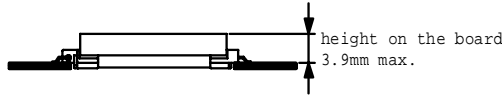
Features

- Slim, low-profile design(3.9mm max*) and high power.
(* height on board is 3.9mm max. Pit type)
- PCB width is 10mm, because pit wide is 7.2mm.
- Supports reflow soldering. (Supports Pb free soldering)
- Supports automatic mounting. (Tray type)
- High efficiency possible by using separate excitation IC.



Applications

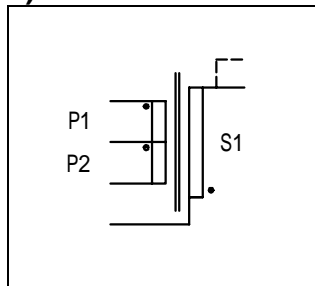
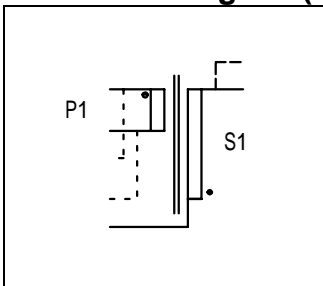
- Note PC
- LCD monitor (up to 17inches)
- LCD TV (up to 17inches)



Electric characteristics

Part No.	Max output power (W)	Frequency (KHz)	Max output Voltage (Vo-p)	Output open Voltage (Vo-p)	Withstand Voltage (AC60Hz) (Vrms)	
					Primary & secondary	Secondary & core
CD-T-1033AS	3.5(5) <*1>	40 - 200	2000 <*2>	2800 <*3>	500	500

Connection diagram(Example)



Standard GAP (3kinds)	
GAP(mm)	AL(nH/N ²)
NON	-
0.075	100
0.10	90
0.15	75

Ae=8mm²

Notice

To match your exact needs, please contact us for information on T-1033AS customization.

The T-1033AS cannot be used in a floating type circuit.

Be sure to ground the No.6 pin (start pin of the secondary winding).

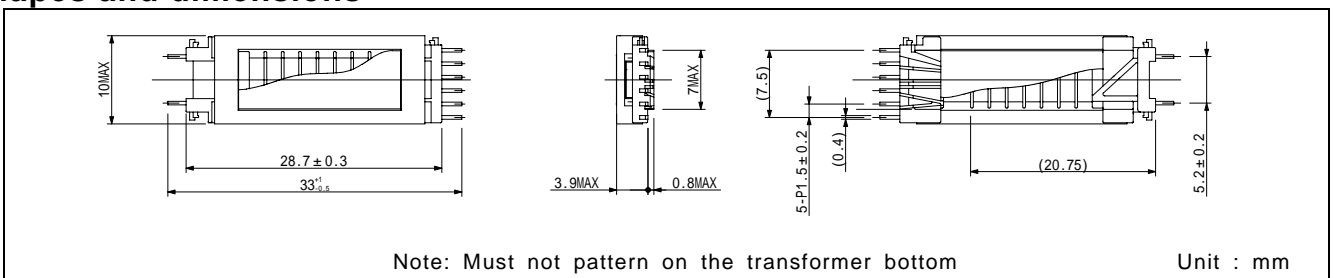
*1 Max output power and efficiency vary according to operating conditions.

(Up to 5W according to operating conditions)

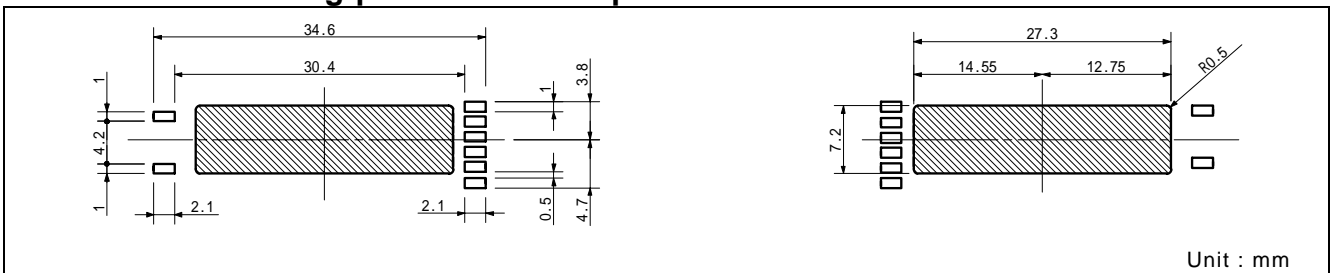
*2 It varies according to the number of winding turns.

*3 It is within 3sec or less and varies according to the number of winding turns.

Shapes and dimensions



Recommended landing pattern and drop dimensions



The specification is foresight and changes occasionally.